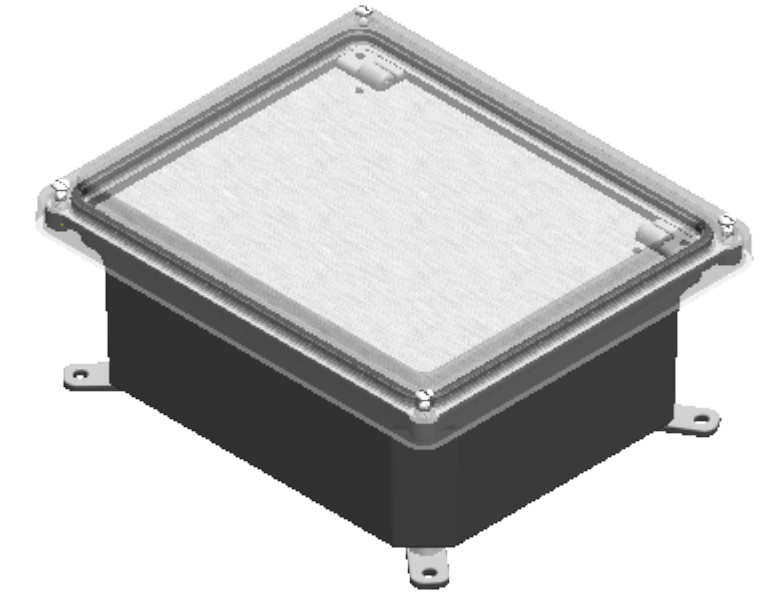
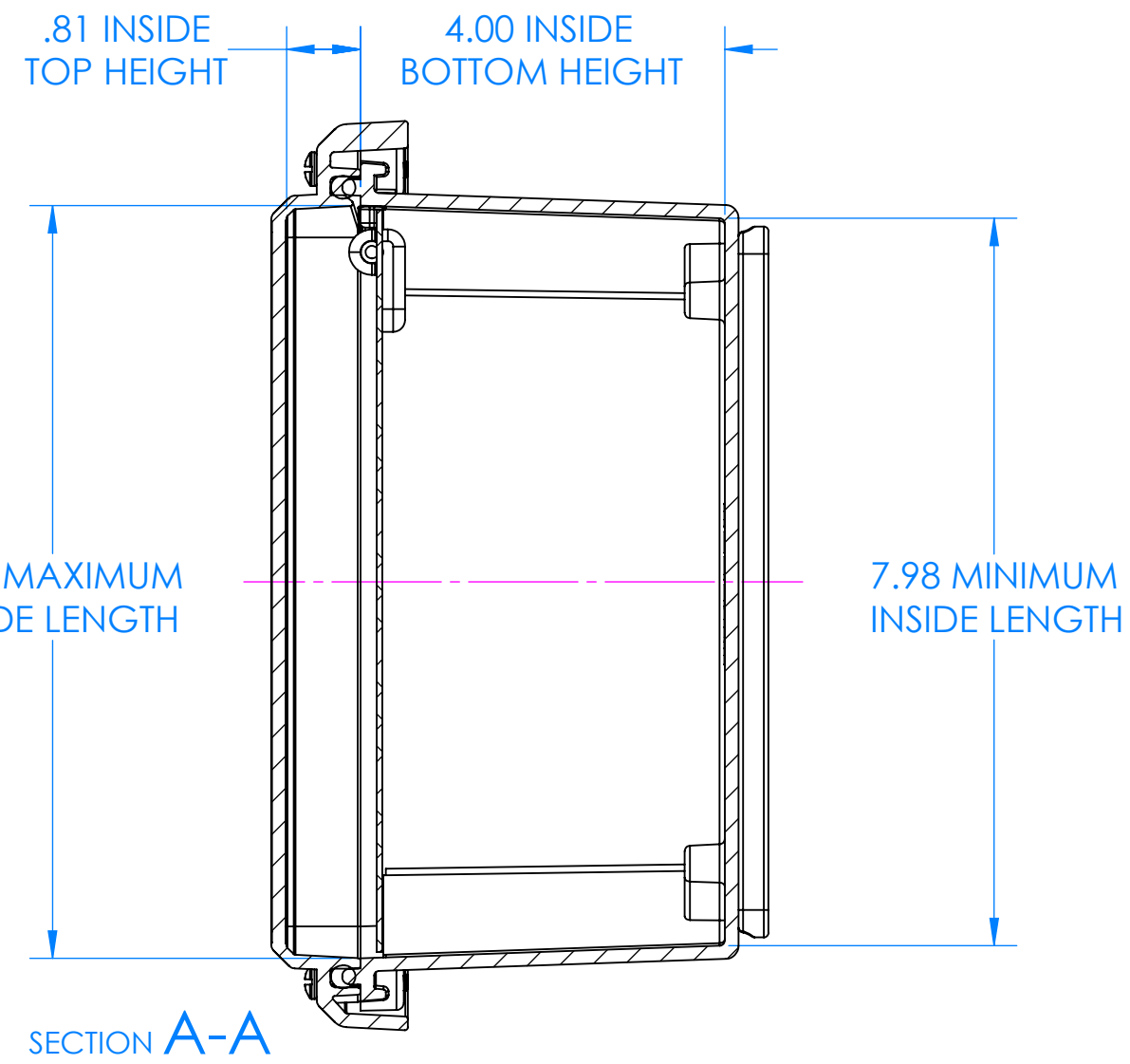
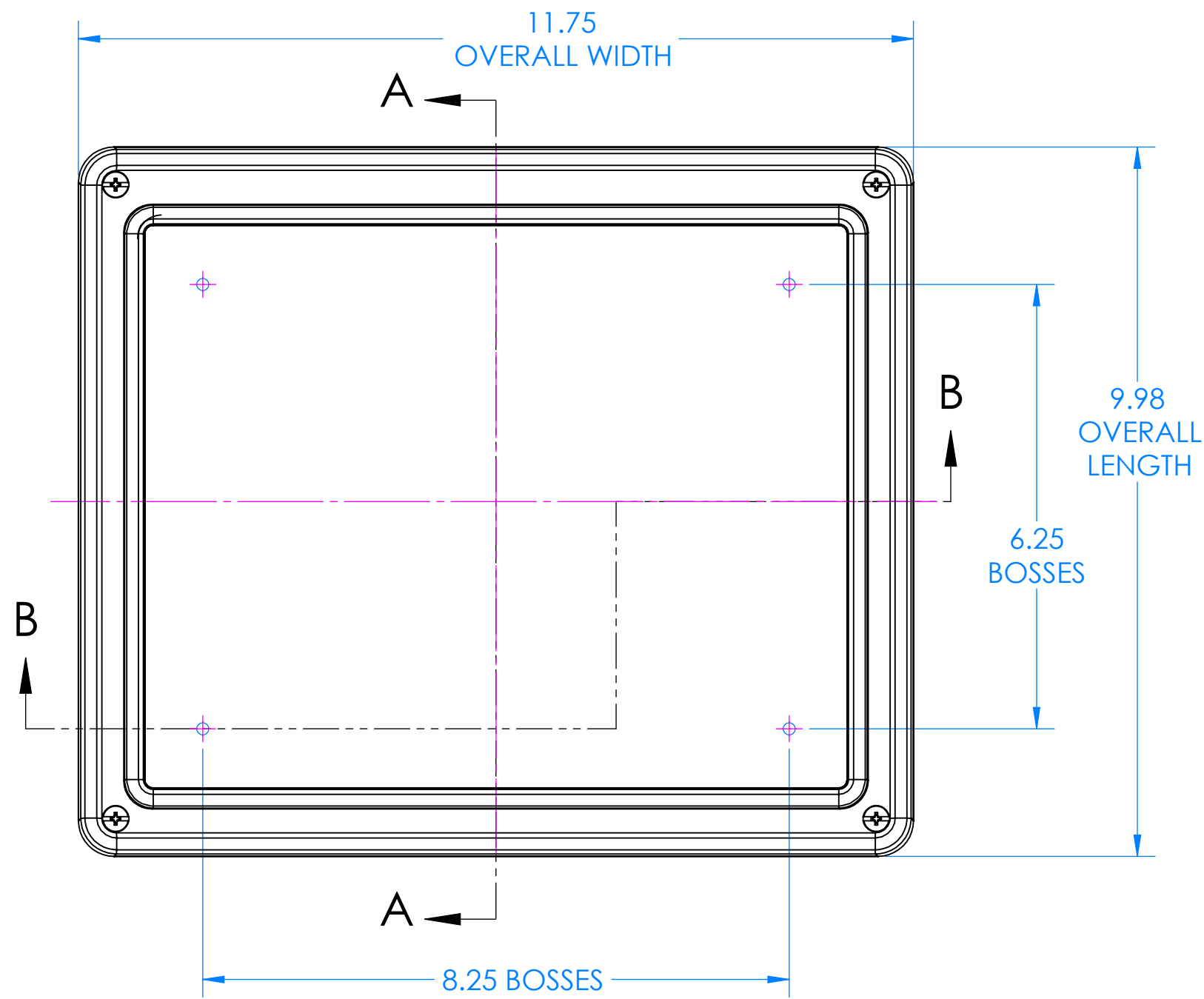
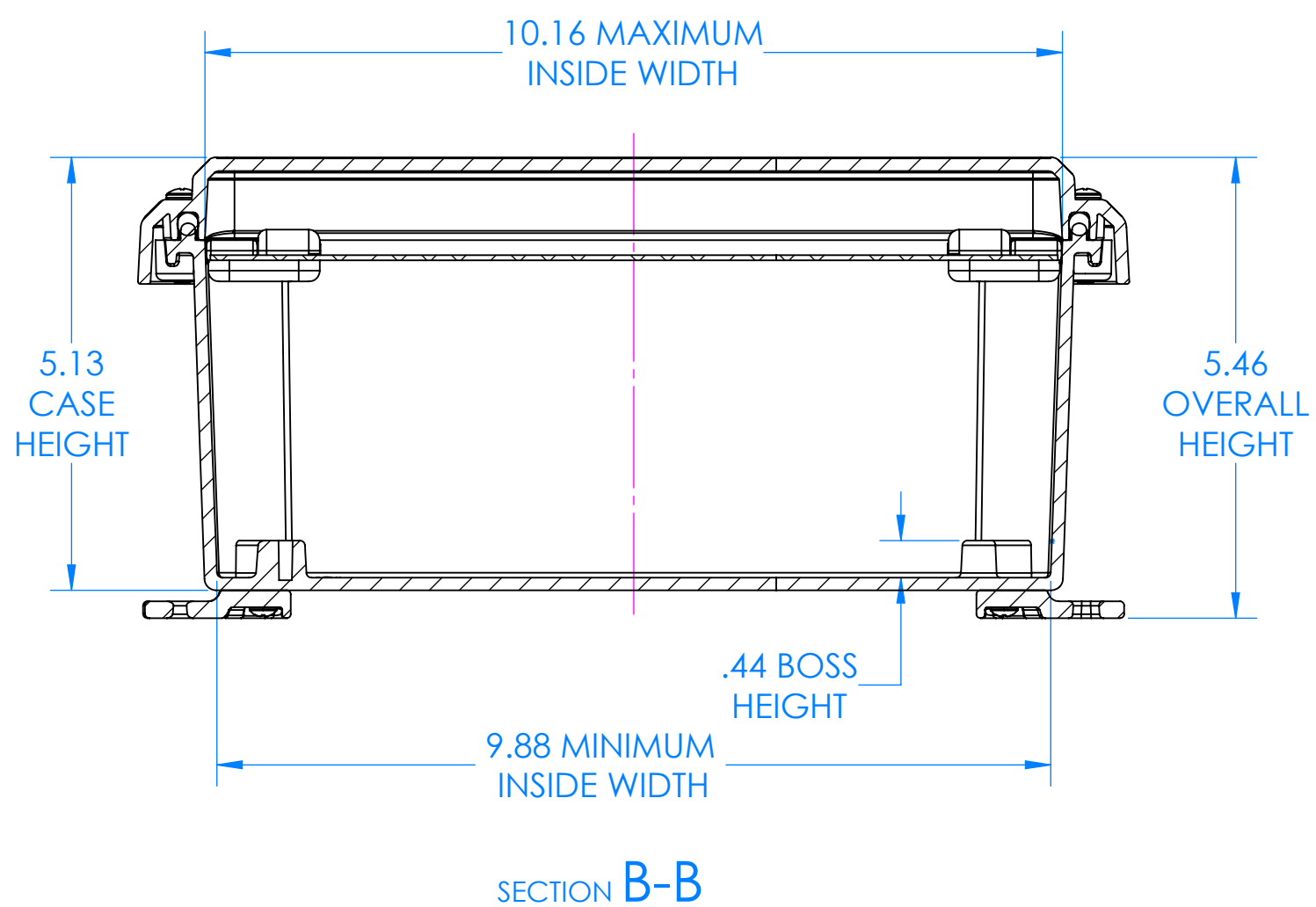


SERPAC I342S

Electronic Enclosures

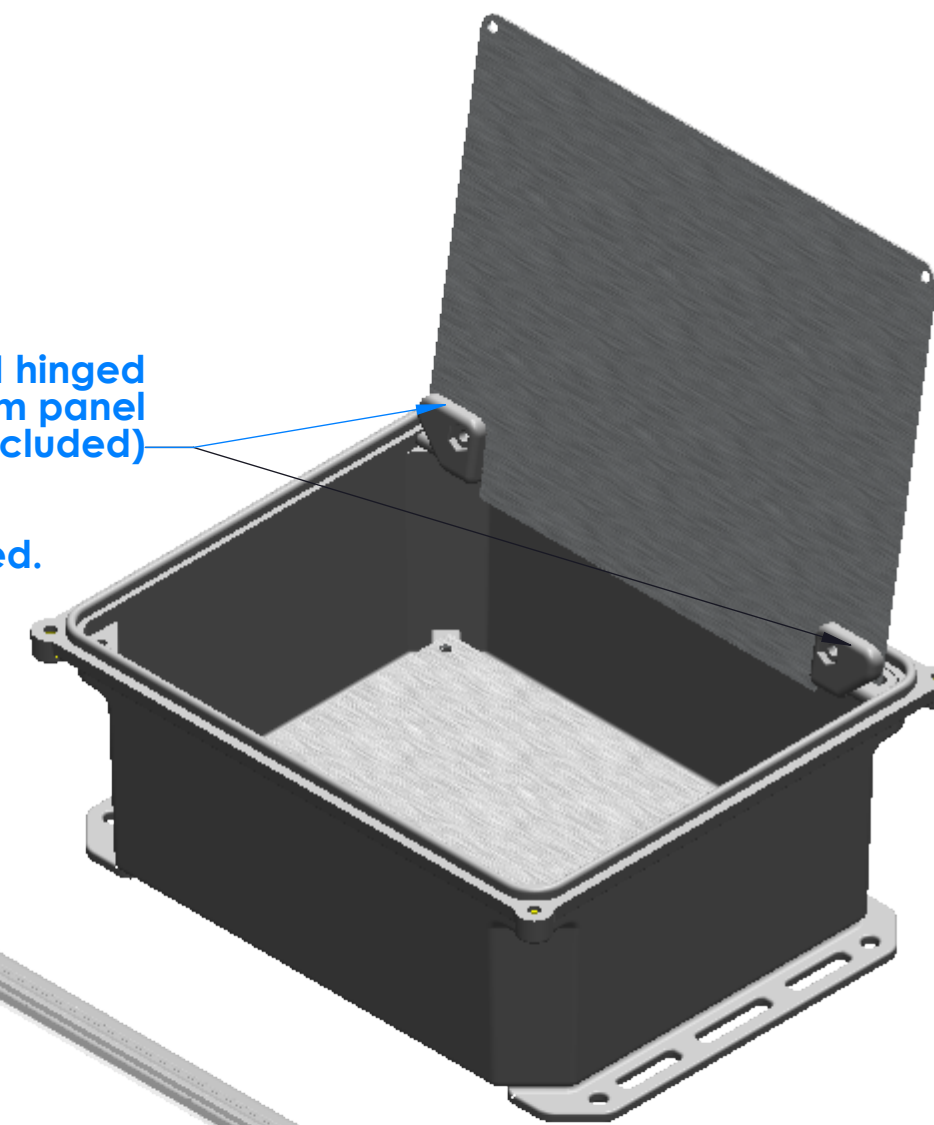


I342S with bottom rotating feet (4 included)



Hinges for p/n 7200TH hinged aluminum panel (2 included)

Aluminum panels for bottom, hinge, and top are not included. They are available as options:
 Bottom panel p/n 72000
 Hinged panel p/n 72020
 Top panel p/n 72040



Open I342S with bottom flanges (2 included)



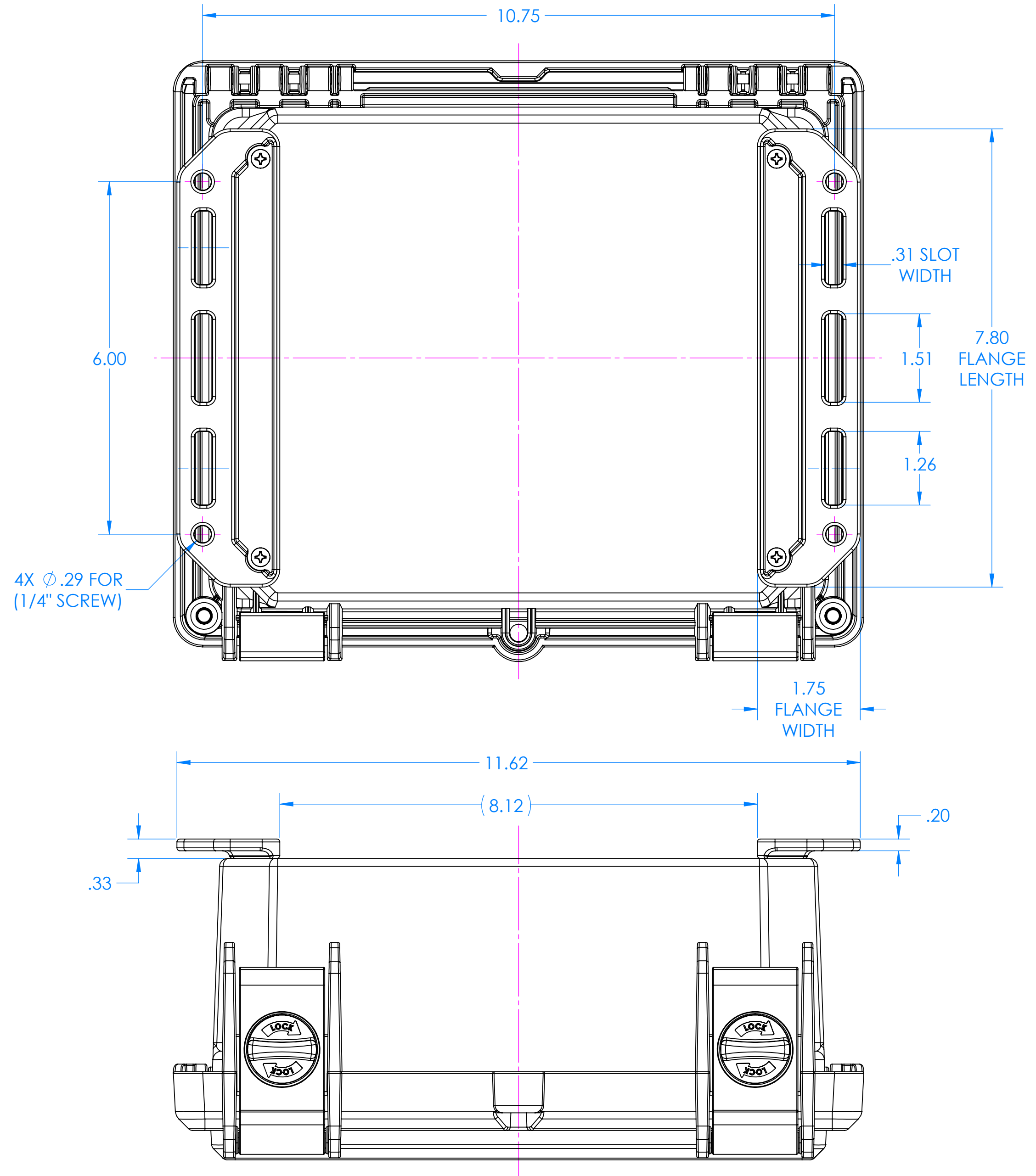
See pages 3-5 for panel dimensions and panel hardware. See page 2 for flange dimensions

-Material: UV stabilized Polycarbonate
 Flammability UL 94 V-0
 -Watertight enclosure meets or exceeds Nema 4 and or IP67.

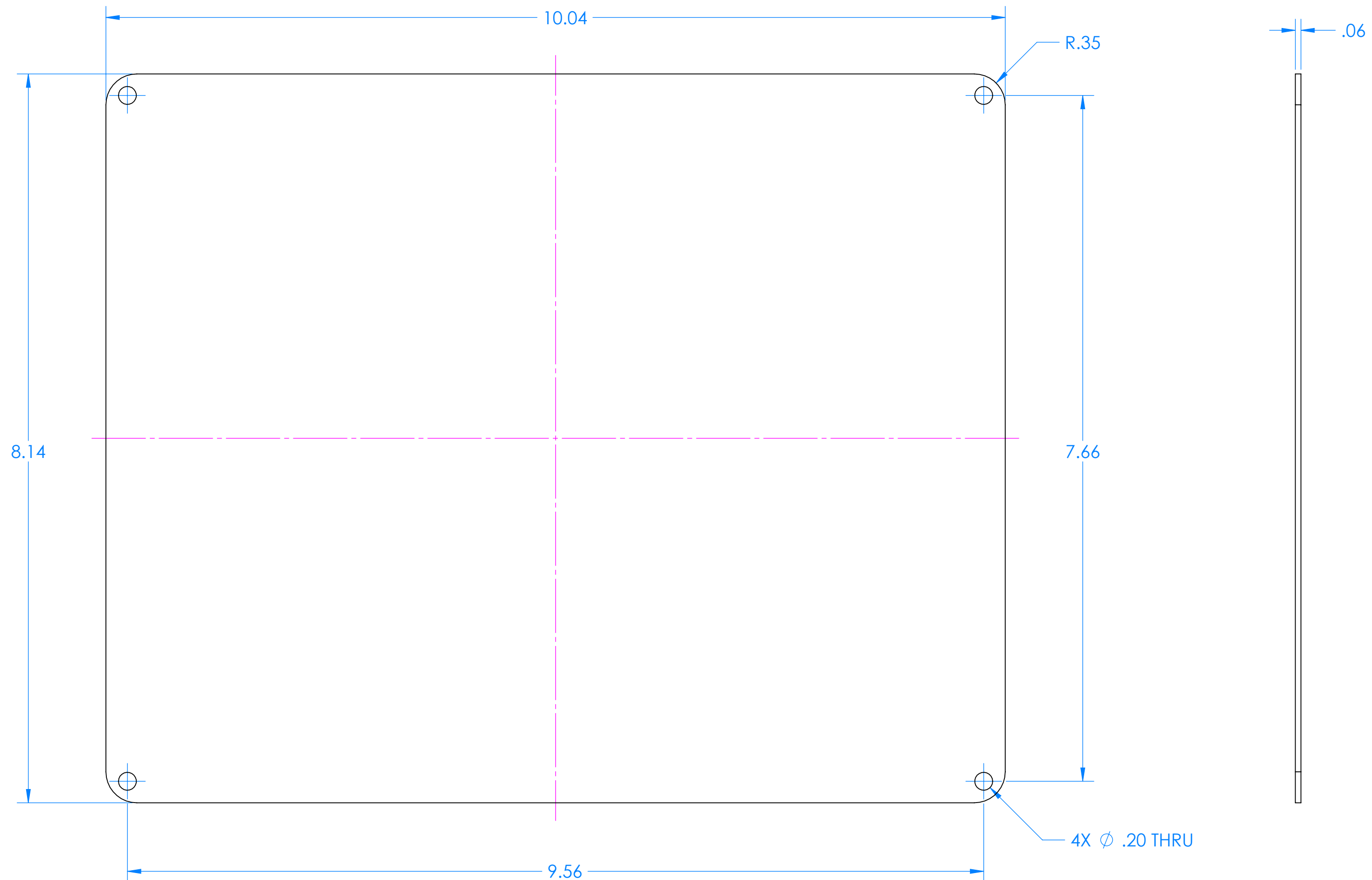
PARTS INCLUDED		
P/N	Qty.	Description
352ST	1	352 S Top
340SB	1	340 S Bottom
8350	1	350 Perimeter O-ring
1305	2	350 Flange
1306	4	350 Feet
1308	1	350 Panel hinge A
1309	1	350 Panel hinge B
6028	4	SS #10 X 5/8" Pan H/L
6031	4	#10 X 1" Screw
8001	4	O-Ring for Screw

I352/I342 Flange Dimensions

I342HL CASE SHOWN.
FLANGE IS FOR I342HL, I342HS,
I352HL AND I352HS

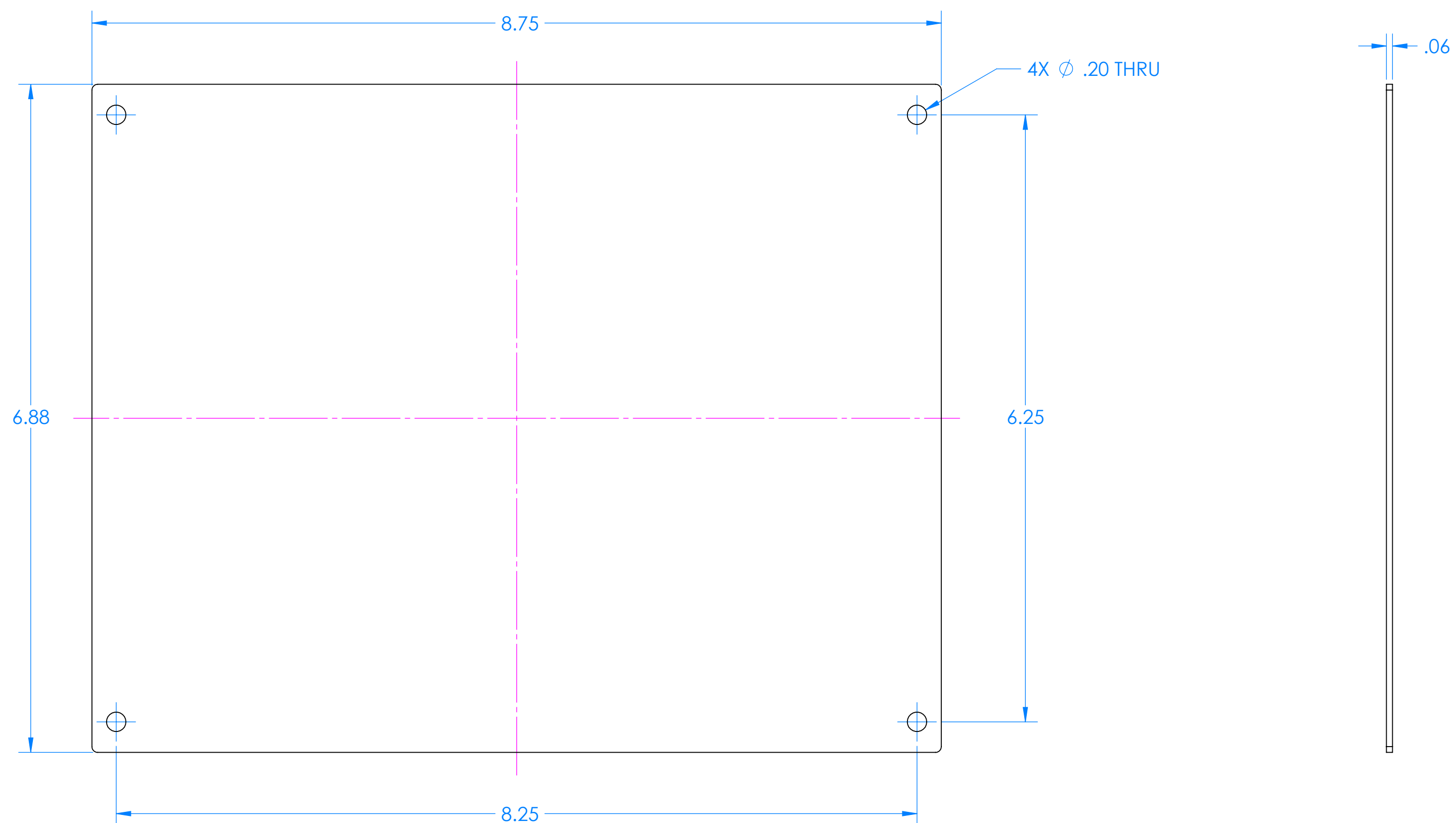


7200T Top Panel Kit for 352HL, 342HL, 352HS, 342HS, 352S and 342S



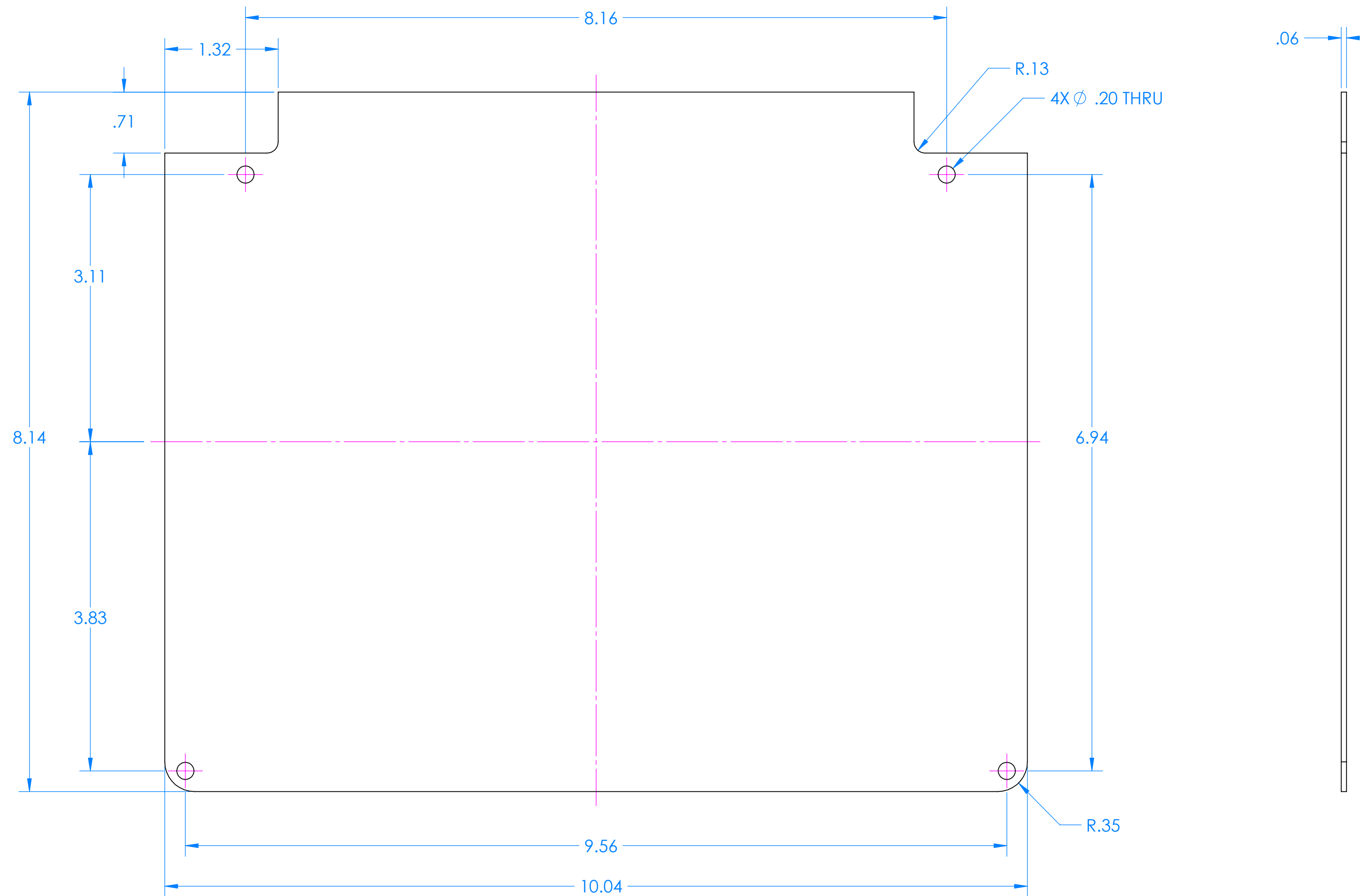
PARTS INCLUDED		
P/N	Qty.	Description
72040	1	Hinged top aluminum panel
6029	4	SS #10 X 3/8" Pan HL Screw

7200B Bottom Panel Kit for 352HL, 342HL, 352HS, 342HS, 352S and 342S



PARTS INCLUDED		
P/N	Qty.	Description
72000	1	Bottom aluminum panel
6029	4	SS #10 X 3/8" Pan HL Screw

7200TH Hinged Top Panel Kit for 352HL, 342HL, 352HS, 342HS, 352S and 342S



PARTS INCLUDED		
P/N	Qty.	Description
72020	1	Hinged top aluminum panel
6029	2	SS #10 X 3/8" Pan HL Screw
6030	2	SS #10 X 3/8" Pan Combo H/L Screw
6105	2	SS #10-32 X 1/8" Nut